

Edwin O. Reischauer Institute of Japanese Studies

Digital Archive of Japan's 2011 Disasters

A crowd-sourced, participatory digital archive, which collects digital materials on the 2011 Great East Japan Earthquake and the ongoing recovery process



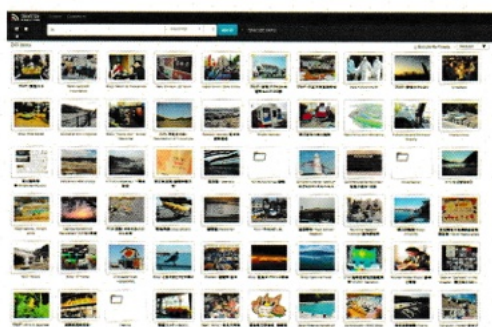
DISCOVER

Search for items by keywords, user-generated tags, location, and time. Overlay results with rich layers of geographic information.



CURATE

Create your personal collection of items, based on your own perspective and interpretation of the disaster. Archive the collection for others to view.



CONTRIBUTE

Easily add websites or testimonials to the archive in any language, using a submission form or bookmarklet. Add your own metadata, and translate existing descriptions of archived items.

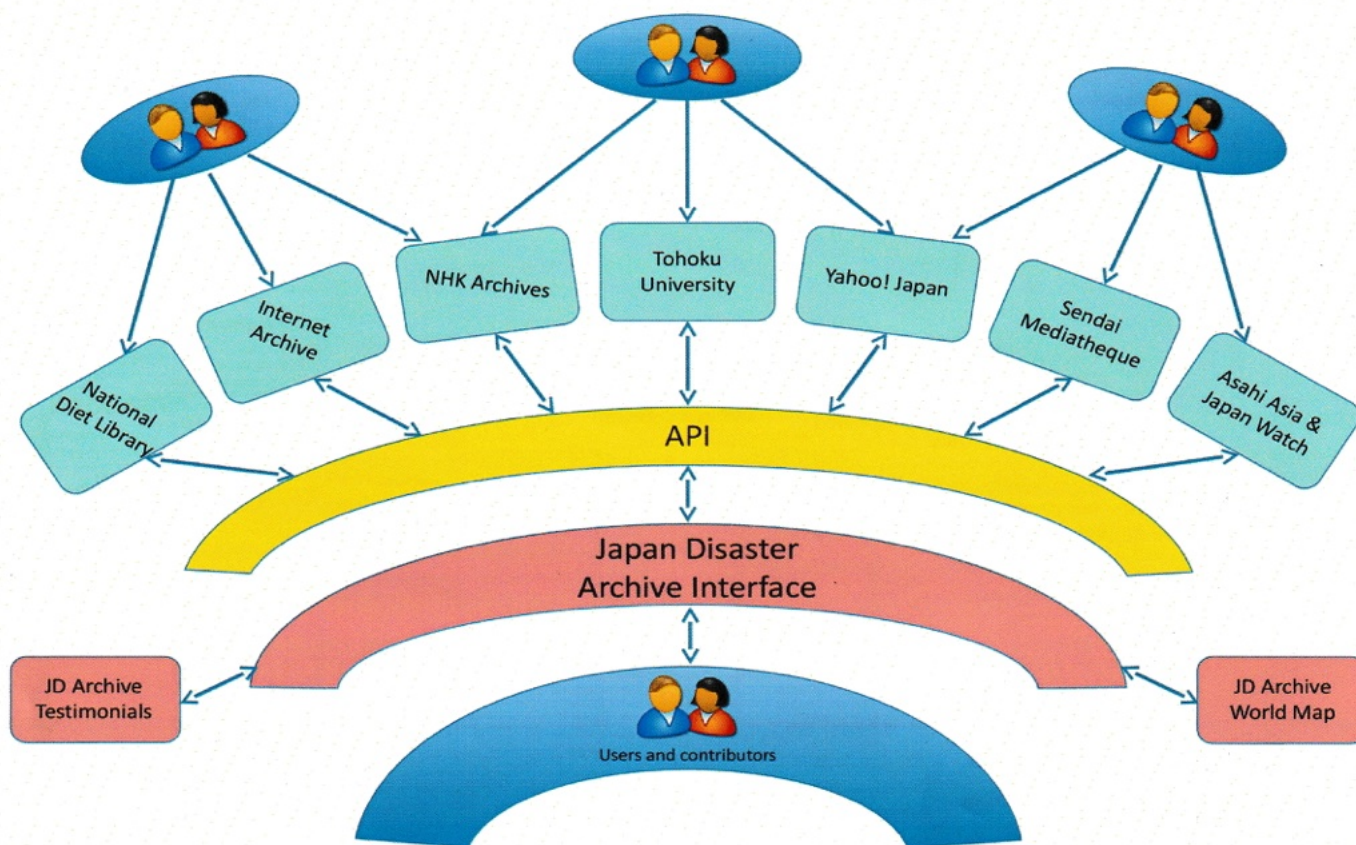


PRESENT

Develop interactive multimedia presentations using the presentation editor. Use the editor for educational exercises or as a creative method of representing the disaster.



PRESERVATION THROUGH BUILDING CONNECTIONS



The Digital Archive of Japan's 2011 Disasters (JDA) is built on a network of users and contributors, as well as partner organizations that provide access to their web content. The JDA stores some material itself, including tweets, testimonials, full-text English news articles, and news headlines, but also acts as a portal site that links to a large number of items such as archived websites, photos, videos, audio, and more. We aim to bring together material from the digital archives, both in Japan and the U.S., in one search interface that provides simultaneous access to these diverse resources.

Not all partners are digital archives; others have created maps and instructional guides for the JDA. Our partners are thus a crucial part of our effort to provide and add value to digital content related to Japan's 2011 disasters. Below are some of our current partners.

311 Memories (National Institute of Informatics)
 All 311 Comprehensive Archiving Project
 Asahi Shimbun AJW
 Harvard Center for Geographic Analysis
 Hypercities
 Internet Archive
 metaLAB (at) Harvard
 Michinoku Shinrokuden

NCC Japan
 National Diet Library of Japan
 NHK
 Sakura on Project
 Sendai Mediatheque
 Tokyo Foundation
 Yahoo! JAPAN

For more information, please contact info@jdarchive.org